


**Lara**

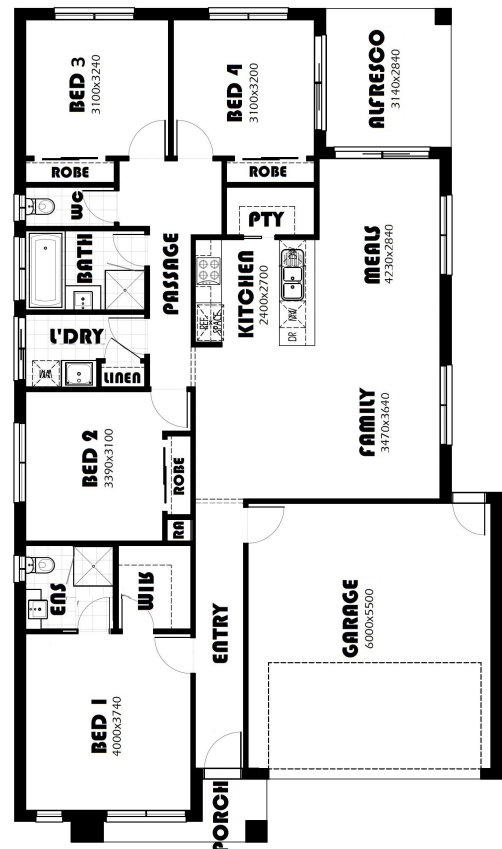
 20 sq  4  2  2  504m<sup>2</sup>
**House & Land Package**

Lot 522 Wattlebird Drive (Lara Lakes), Lara

**TITLED \$697,500-PREMIUM  
TURNKEY Caulfield 20**

OVER \$70K OF PREMIUM INCLUSIONS

- Front & rear landscaping
- Half share fencing & driveway
- Flooring throughout
- Higher ceilings
- Stone benchtops to kitchen & bathrooms
- LED downlights throughout
- Modern appliances including dishwasher
- Overhead cupboards to kitchen
- Blinds throughout
- 5kW split system cooling
- Ducted heating throughout
- Tiled shower bases
- Chrome finish double towel rails and toilet roll holders
- Framed mirror or vinyl sliding doors to robes
- Brick infills over windows
- Remote control garage
- Window locks & flyscreens to all openable windows
- Clothesline and letter box
- NBN connection
- Multiple facade options


**Contact - Shweta Kharbanda**

 Mobile: 0474 321 859 | Email: [shweta@hlvictoria.com.au](mailto:shweta@hlvictoria.com.au)